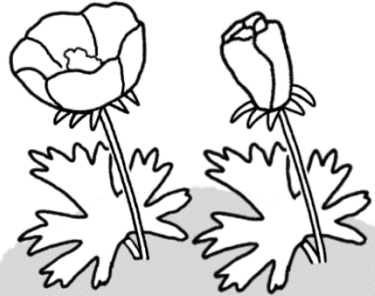


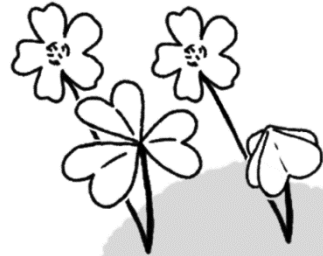
# LIFE DURING AN ECLIPSE...

**IT'S A MYSTERY!** Total solar eclipses are so rare and short that we don't yet have all the answers to how local wildlife behaves during them. But here are some nocturnal behaviors to look out for!

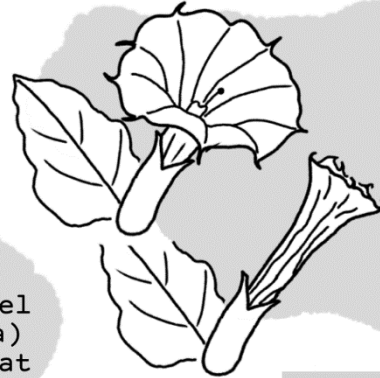
## Nyctinasty Plants...



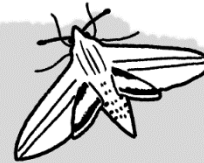
Winecup flowers (*Callirhoe involucrata*) close at night.



Yellow woodsorrel (*Oxalis stricta*) leaves fold up at night.



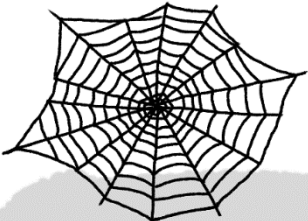
Toloache (*Datura* genus plants) unfurl at night for nocturnal pollinators like the white-lined sphinx moth (*Hyles lineata*).



## Explore...

- 
- Which plants, fungi, and animals seem to react to the eclipse in your area?
- Which do not?
- If it's cloudy or rainy during the eclipse, does it's darkness still have any effects?

## Animals...

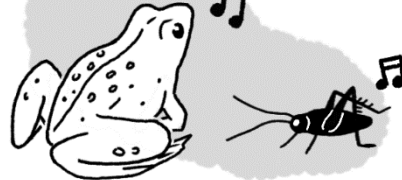


Daytime orb weaver spiders may start deconstructing their webs.

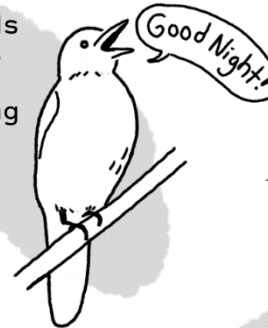


Bats may briefly stir.

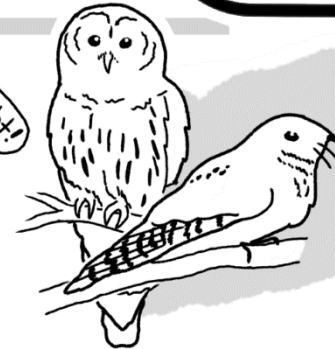
Frogs and crickets may start to sing.



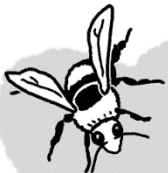
Daytime birds like robins may start their evening songs.



Nocturnal birds like owls and nightjars could awaken.

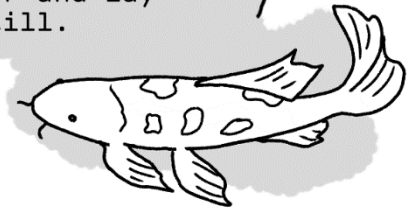
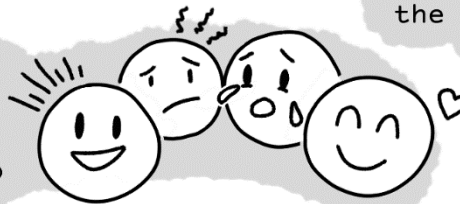


Koi fish and pond turtles may go to sleep just beneath the water and lay still.



Native bees may go take shelter or sleep on flowers.

Humans (*Homo sapiens*) are animals. You are part of Nature! Some people get excited, while others feel anxious. However you react to the eclipse is natural!



**STAY SAFE!!! NEVER** look at the sun (even a small piece of it) without proper ISO 12312-2 regulation eclipse glasses. **NEVER** use eclipse glasses to look through a lens, like with a camera, telescope, or binocular because the focusing power of the lens will make the light burn through it. And **NEVER** try to use sunglasses instead of eclipse glasses. You will permanently damage your eyes!